

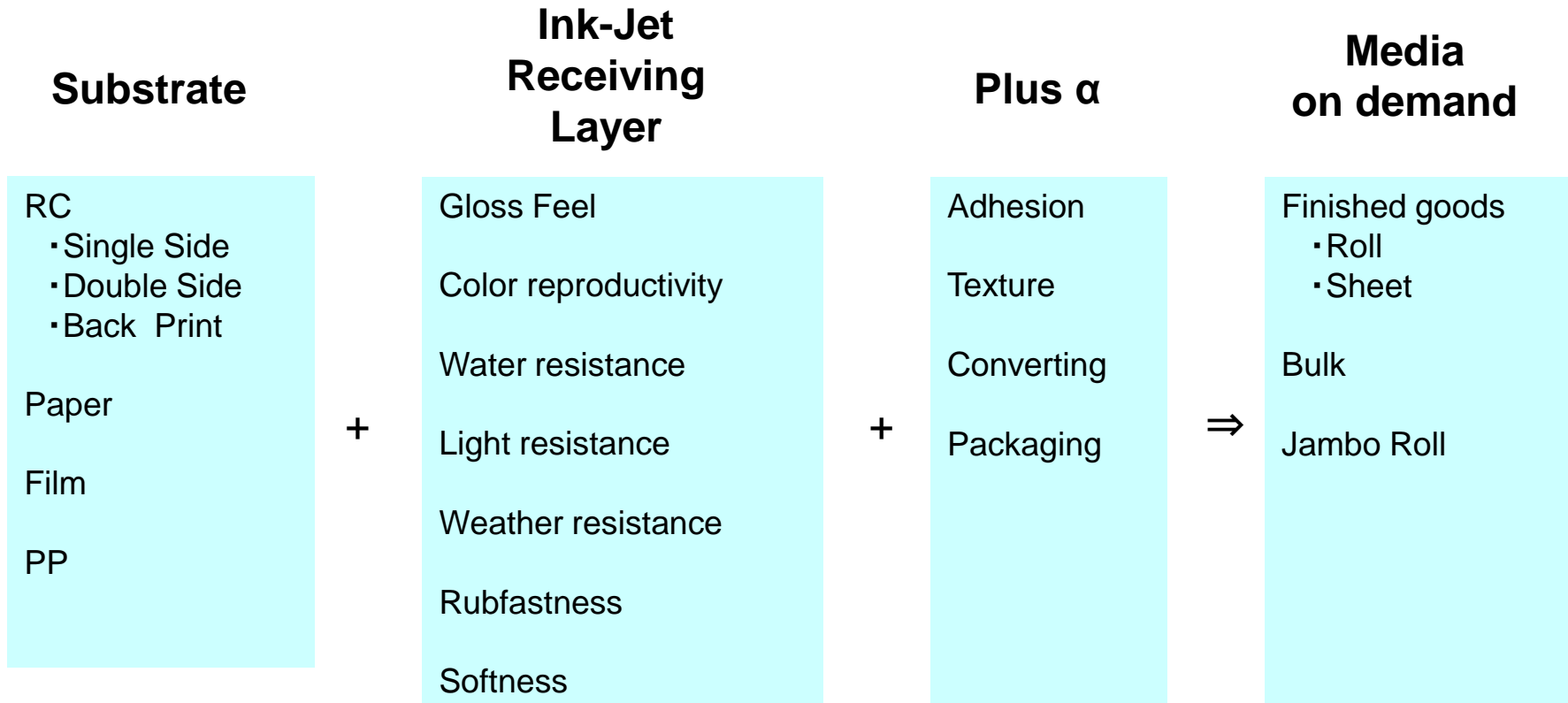
Mitsubishi Photo Inkjet Media Introduction

三菱 写真調インクジェットメディア 紹介

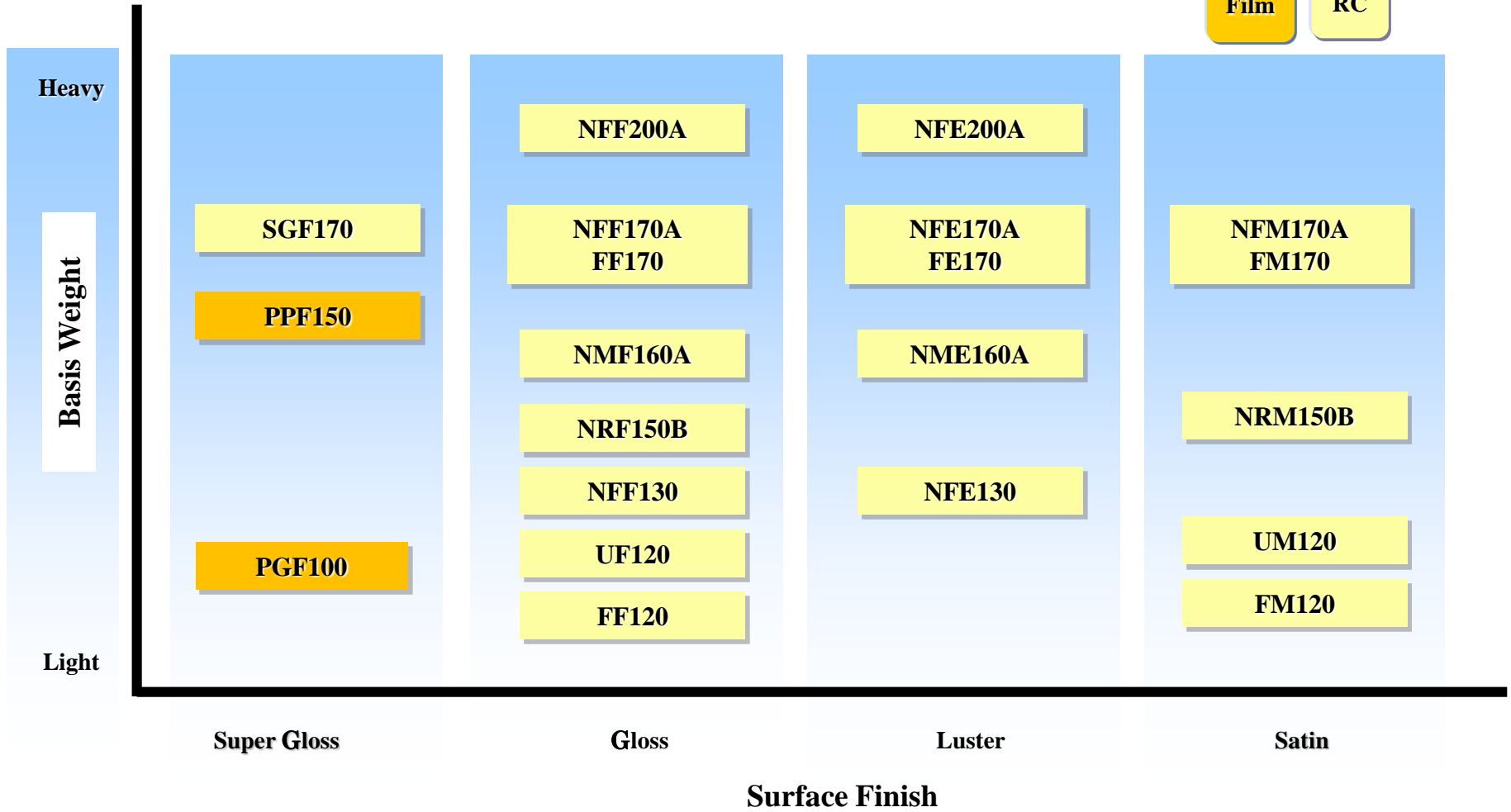


三菱製紙株式会社

Media on demand



Ink Jet / Standard media

Film
RC


Ink Jet / Fine Art & Special media

RC Paper PP

Application

Photo Album (coated 2 side)	RC2NFE200		RC2NPM130		
	RC2NFE130				
Fine Art	Pearl			NPM170A	
	GKSP	PPG	PPZ200		
	AG180				
Proof	PAG130		FPRM130	FPRM130B	
			FPRM170	FPRM170B	
Eco-sol	YF170	YM170			
Special	DP GLOSS PEARL (Indigo)	DP LUSTER PEARL DUAL (Indigo)			
	EP PEARL DUAL160/200 (Dry Toner/Indigo)				

Gloss

Luster

Satin

Matte

Smooth Matt

Surface Finish

New Metallic Pearl media

- ✓ Brilliant inkjet media using photographic paper.
- ✓ It has a unique gloss feeling of 7 different colors.
- ✓ Suitable for label applications and high-end photo applications.

Sample	Base	Ink	Particles
IJ-RC-IHF160H	RC	Dye/Pig	Silver small
IJ-RC-ISF160H	RC	Dye/Pig	Silver big
IJ-RC-IBF160H	RC	Dye/Pig	Blue
IJ-RC-ISGF160	RC	Dye/Pig	Shiny gold
IJ-RC-IGSF160	RC	Dye/Pig	Gold small
IJ-RC-IGF160	RC	Dye/Pig	Green
IJ-RC-IVF160	RC	Dye/Pig	Violet

Water resistance media (Label application)

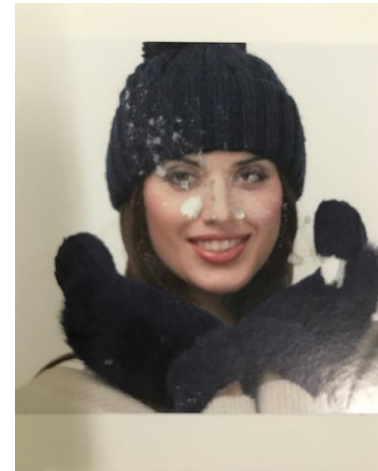
- ✓ Label media can be used with pigment and dye ink.
- ✓ Label media have water resistance (Dye ink) and good rubbing ability (Pigment ink)



Dye ink

Commercial item

Mitsubishi label media



Pigment ink

Commercial item

Mitsubishi label media

Mitsubishi Photo Inkjet media Sample book



- ✓ In our company , a lineup make various types of products.
- ✓ When you need a sample book , please contact the parson in charge.



連絡先：
三菱製紙株式会社
イメージング事業部
イメージングメディア営業部

木下 周三
Email: kinoshita_syuzo@mpm.co.jp

Contact:
Mitsubishi Paper Mills Limited
Imaging Media Dept.
Imaging Division

Shuzo KINOSHITA
Email: kinoshita_syuzo@mpm.co.jp