

# 三菱プロダクションIJメディア

---

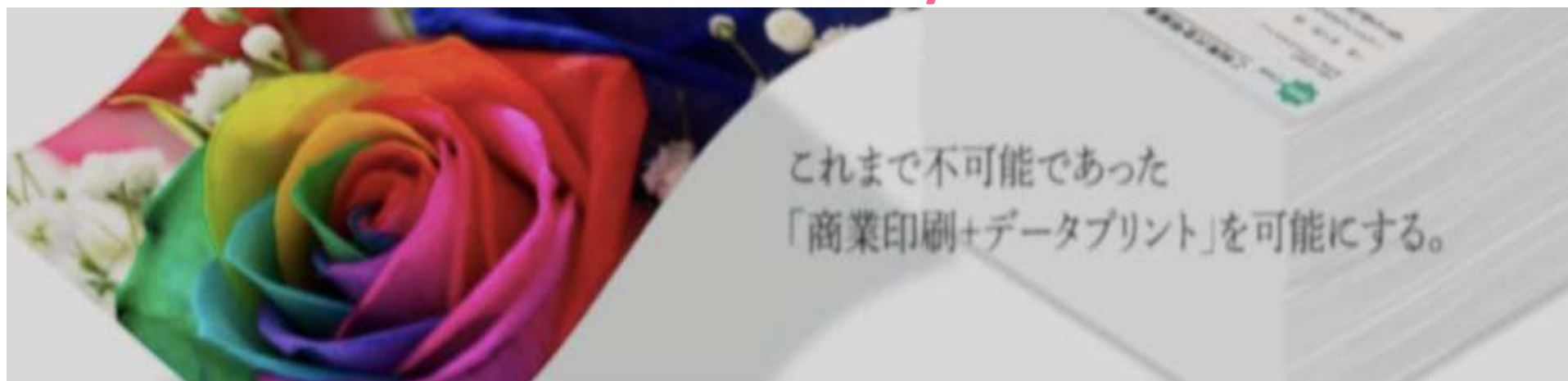
## Mitsubishi Production Inkjet Media

**SWORD iJET®**

**Premier IJ**

**Value IJ**

**IJ Form Unity**



# Mitsubishi Production Inkjet Media

**SWORD iJET®** is a premium inkjet coated paper that sets a new standard for gloss and matte stock in the high-speed inkjet market.

## FEATURES and BENEFITS

- ✓ Compatible with Most Pigment & Dye Inks
- ✓ No pre or post treatment required
- ✓ Revolutionary Coating Technology
- ✓ Unmatched Print Performance
- ✓ Superior Color Matching
- ✓ Maximum Print Speed
- ✓ Fast Dry

SWORD iJET®5.5  
High Gloss

SWORD iJET®4.3  
Gloss

SWORD iJET®4.3  
Matte

✓ Premium High  
Gloss

✓ Premium Gloss

✓ Premium Matte

**Mitsubishi Premier IJ Form** is a premium, bright white, matte lightweight inkjet coated paper designed for high resolution graphics. The proprietary instant dry coating produces exceptional color gamut and line acuity without sacrificing print speed or color accuracy.

**Mitsubishi Premier IJ Book** is a lightweight coated inkjet paper that raises the bar for high-volume book printing. With a brighter, whiter and more opaque sheet, Premier IJ Book (43# text) offers a valuable yield savings, exceeds the 800 PPI requirement and allows for easier production with lower drying temperatures.

**Mitsubishi Premier IJ NEWS** is a lightweight matte coated paper specifically designed for high-speed production environments. It has the look and feel of newsprint and produces sharp line detail with excellent color reproduction and high black density. Premier IJ NEWS can be used to create highly personalized printed content to maximize customer engagement.

**Mitsubishi VALUE IJ TRANSACTION** is a super lightweight coated, natural white, matte finished inkjet paper. The proprietary instant dry coating produces exceptional color gamut and line acuity without sacrificing print speed or color accuracy.

**Mitsubishi IJ FORM UNITY** is a treated inkjet paper suitable for high-volume transaction printing. With a bluish brighter and whiter sheet, IJ FORM UNITY allows for easier production with lower drying temperatures which can bring lower energy consumption.

# Mitsubishi Production Inkjet Media



森をまもりながら紙をつくる

Product name	Finish	Weight gsm	Weight lbs	ISO Brightness	Opacity	Paper Gloss	Caliper $\mu\text{m}$
Sword iJET®5.5 High Gloss	High Gloss	90.0	61# Text	93	92	80	77
		118.4	80# Text	93	95	80	100
		127.9	86# Text	93	96	80	110
		214.0	79# Cover 7pt	90	99	80	190
		250.0	92# Cover 9pt	90	99	80	243
Sword iJET®4.3 Gloss	Gloss	90.0	61# Text	88	91	65	79
		104.7	71# Text	88	93	65	92
		118.4	80# Text	88	94	65	105
		127.9	86# Text	88	95	65	116
		157.0	106# Text	88	97	65	146
		197.7	73# Cover 7pt	88	99	65	192
		249.0	92# Cover 9pt	88	99	65	244
Sword iJET®4.3 Matte	Matte	90.0	61# Text	87	91	35	89
		104.7	71# Text	87	94	35	107
		127.9	86# Text	87	96	35	131
		157.0	106# Text	87	97	32	164
		178.5	66# Cover 7pt	87	98	30	188
		224.4	83# Cover 9pt	87	99	30	242

All are double side coated.

All values are targets

# Mitsubishi Production Inkjet Media



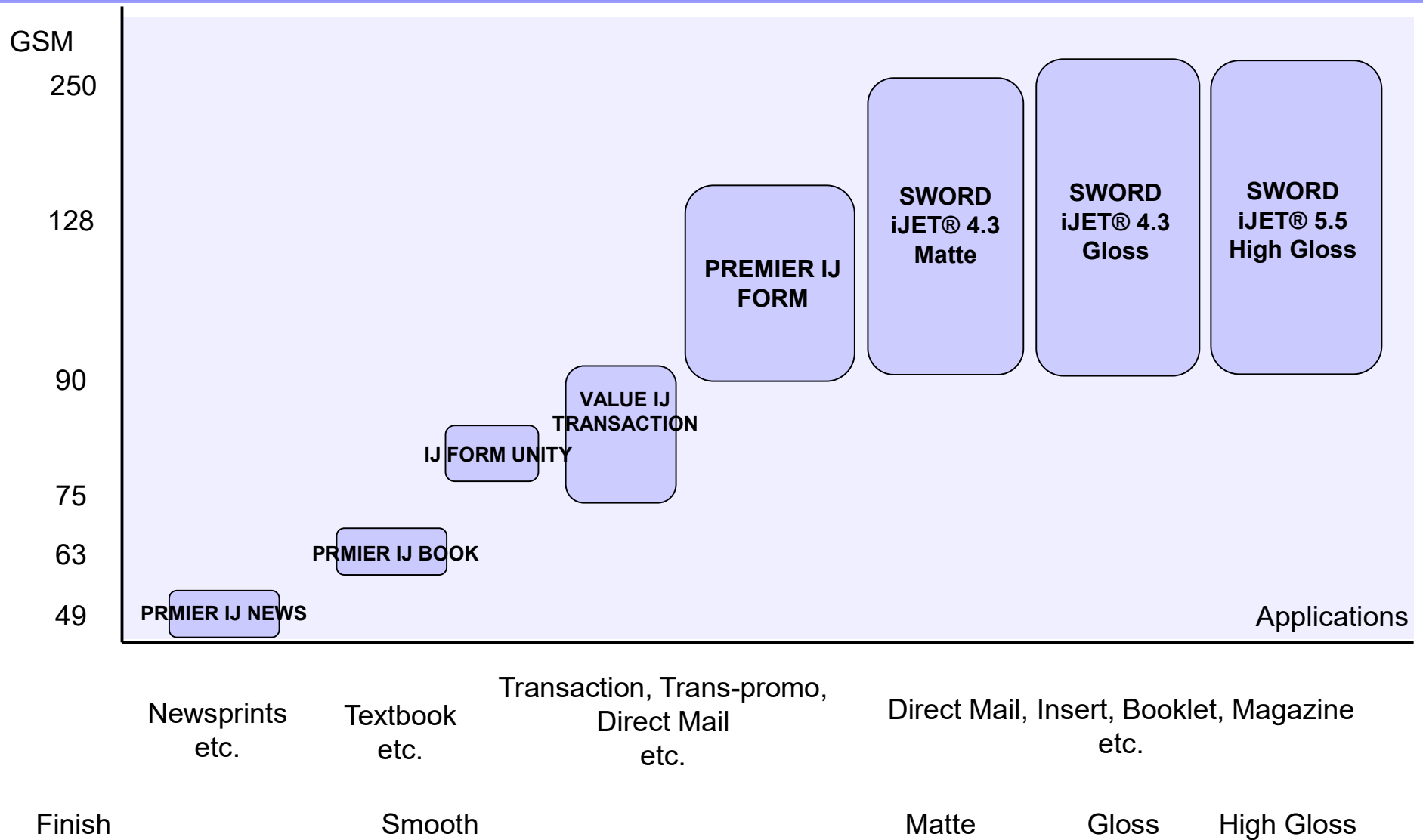
森をまもりながら紙をつくる

Product name	Finish	Weight gsm	Weight lbs	ISO Brightness	Opacity	Caliper	Bekk Smoothness
IJ FORM UNITY	Smooth	80.0	21# Bond	94	95	100	35
VALUE IJ TRANSACTION	Smooth	75.0	20# Bond	93	93	92	50
		90.0	24# Bond	93	95	110	50
PREMIER IJ FORM	Smooth	90.0	61# Text	96	95	100	80
		104.7	71# Text	96	96	123	50
		127.9	86# Text	95	98	156	50
PREMIER IJ PLUS	Smooth	150.0	55# Cover 7pt	93	99	188	20
		185.0	68# Cover 9pt	93	100	240	15
PREMIER IJ BOOK	Smooth	63.0	43# Text	86	93	63	190
PREMIER IJ NEWS	Smooth	49.8	33# Text	70	93	63	60

All are double side coated.

All values are targets

# Mitsubishi Production Inkjet Media



# Mitsubishi Production Inkjet Media

## Case study



Catalogue, Inserts  
Media: Sword iJET®



Calendar  
Media: Sword iJET®



Newsprints  
Media: Premier IJ News



DM, Catalogue  
Media: Sword iJET®



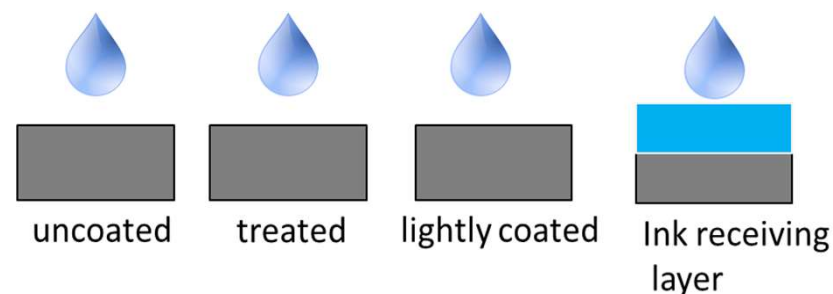
Textbook, DM  
Media: Sword iJET®  
IJ フォームPEX



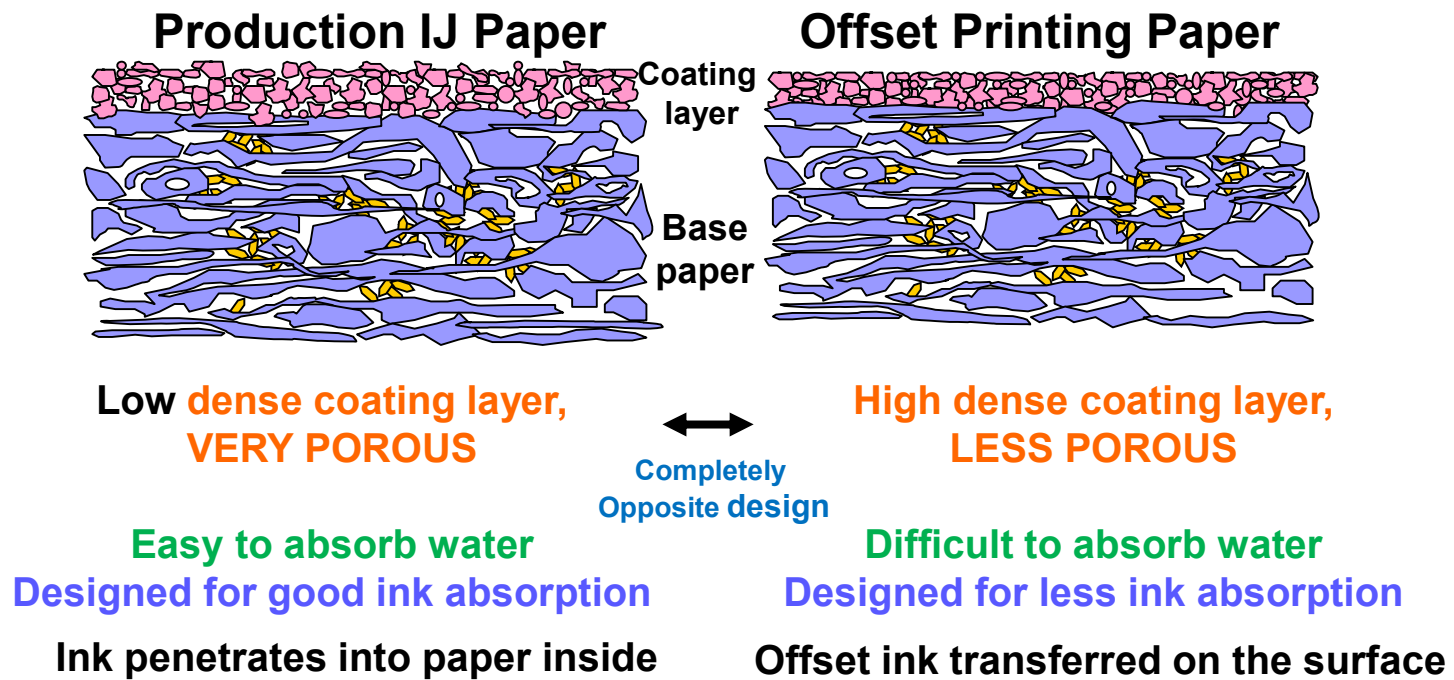
# Paper is not just paper

## Many Types are there

- Uncoated – ink penetrates the paper fibers uncontrollably
- Untreated – Offset paper products
- Treated- typically an uncoated paper with a chemical treatment. The treatment helps ink adhere to the paper.
- Lightly Coated - light Ink receptive layer or coating applied to the paper stock.
- Inkjet Coated – Full ink receptive layer or coating is applied to paper stock. The layer is comprised of small particles of inorganic compounds. These particle form the fine spaces within the coating where ink is absorbed.

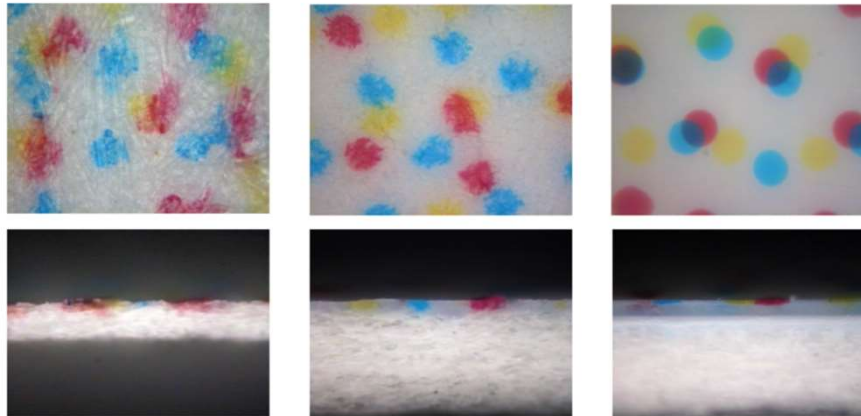


# Paper Structure

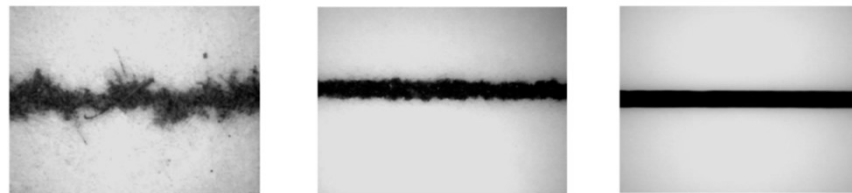


# Results You Can See

- Superior Dot Retention



- Excellent Line Acuity



# 三菱プロダクションIJメディア

---

## Mitsubishi Production Inkjet Media

**SWORD iJET®**

**Premier IJ**

**Value IJ**

**IJ Form Unity**

連絡先:  
三菱製紙株式会社  
洋紙事業部  
印刷・情報用紙営業部

木村 篤樹  
Email: kimura\_atsuki@mpm.co.jp

Contact:  
Mitsubishi Paper Mills Limited  
Commercial Printing & Business  
Commination Paper Sales Dept.  
Paper Division  
Atsuki KIMURA  
Email: kimura\_atsuki@mpm.co.jp