

## This week's update (week31, 2020)

~**i-Focus** Specializing in variable data inspection~

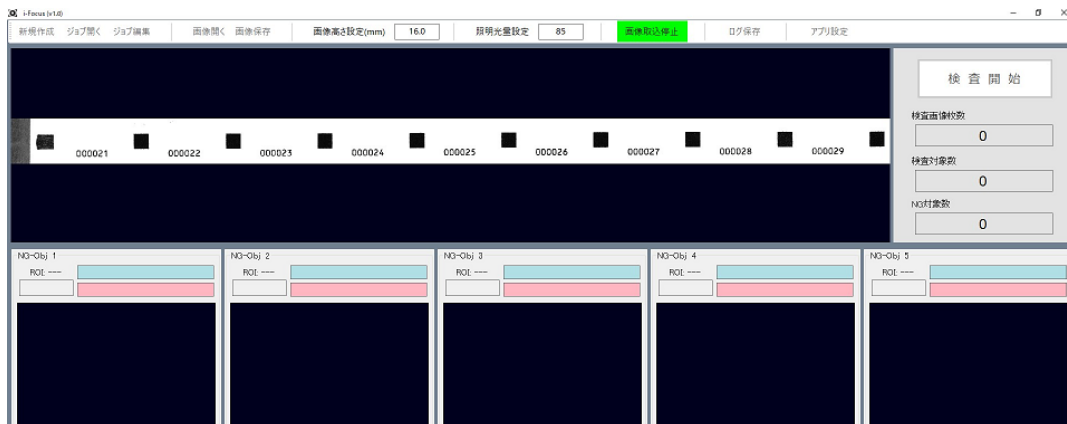
Our newly developed **i-Focus** is an inspection device that uses Canon CIS type (contact image sensor) camera to read the variable data printed by **Stream Jet** and collate it with the inspection data generated by VIPS. The UI is easy to use by specializing in verification. The biggest advantage is that it can be operated together with **Stream Jet**.

The Canon CIS camera is an integrated line sensor that has a fixed-focus lens that focuses on a fixed distance and a light source that is synchronized during image capture, so it can be installed in a narrower space than conventional line sensors.

### 【Basic specifications of **i-Focus**】

	<b>i-Focus 330</b>	<b>i-Focus 476</b>
Camera type	CIS type camera IDCCFC-300 monochrome	CIS type camera IDCCFC-476 monochrome
Effective reading width	329.3mm	475.8mm
Resolution	Approx. 84.6 $\mu$ m/pixel (@300dpi)	
Max.Inspection speed	150m/min(※)	
Light source	White LED array	
Inspection contents	Print reading, collation with original data	
Inspection target	OCR One-dimensional barcode, two-dimensional barcode	

(※)Actual speed depends on inspection contents and accuracy. An inspection test is required in advance.



**Should you have any questions do not hesitate to contact us!**